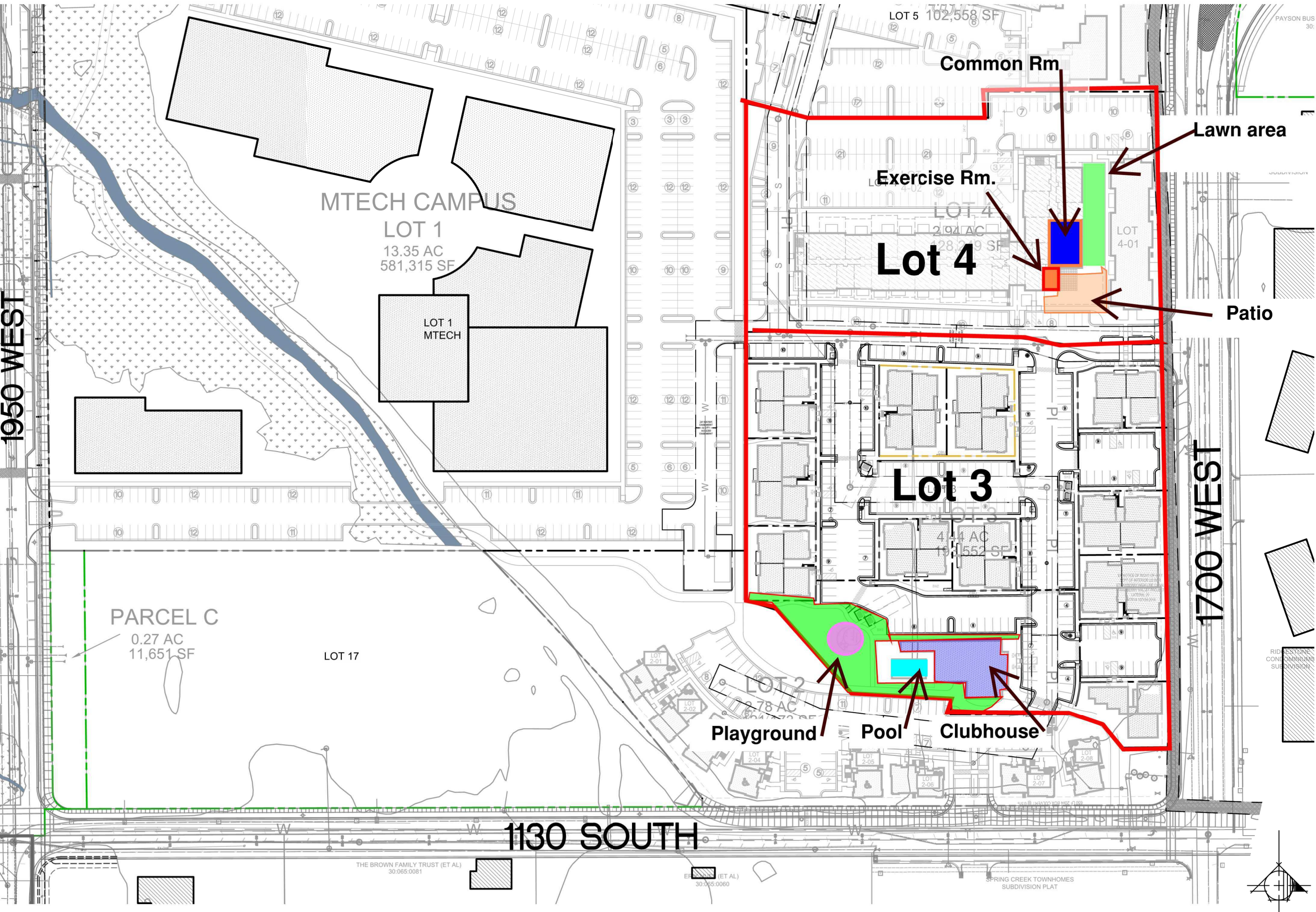


1950 WEST

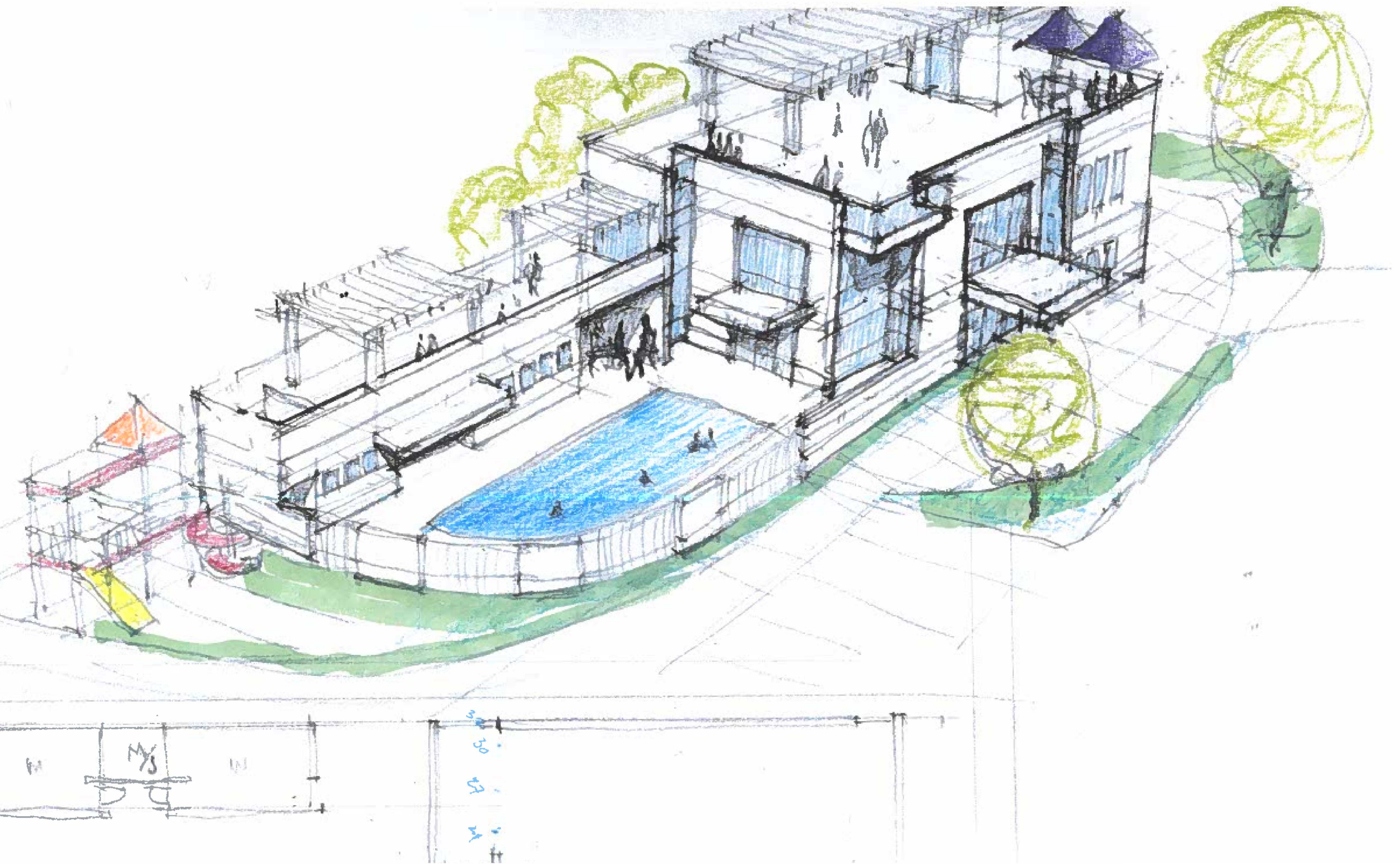


RED BRIDGE STATION AREA

Payson, Utah
Lot Line Overlay

Job #	
Dr. By	MTJ
Ch. By	
Rev. By	
Revisions	
Date:	PRELIMINARY

Sheet:
AS101



3/24/2022 4:41 PM K:\LOT ARCHITECTURE\LOT 03 - 12 PLEXES\2- PROJECT PLANNING & DESIGN\3- SCHEMATIC DESIGN\VERSION 1\CAD\WB-C- 12-PLEX SITE\DWG Plot15/24/2022 4:48 PM



Red Bridge - 12-Plex Site Plan
1" = 30'-0"
(1" = 60'-0" ON 11x17 PAPER)

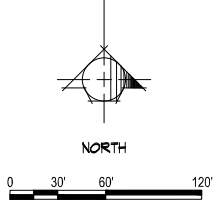
2 BEDROOM
12-PLEX

3 BEDROOM
12-PLEX

2 BEDROOM
9-PLEX

BUILDING TYPE LEGEND

- NUMBER OF UNITS IN BUILDING
- BEDROOMS PER UNIT
- DESIGNATED TYPE-A UNIT - ALL OTHER UNITS ON THE GROUND FLOOR WILL BE TYPE-B; UNITS ON UPPER LEVELS ARE EXEMPT FROM THE ADA UNIT TYPE REQUIREMENTS.



JWRA Architects
2299 S. Highland Dr., Ste. 200
Salt Lake City, UT 84106
Phone: (801) 486-7777
www.jwraia.com



COPYRIGHT 2021
JWRA ARCHITECTS
ALL RIGHTS RESERVED
THIS DRAWING IS THE PROPERTY OF JWRA ARCHITECTS AND MAY NOT BE REPRODUCED, COPIED, OR OTHERWISE USED OR ENCLOSED WITHOUT THE WRITTEN CONSENT OF JWRA ARCHITECTS.

RED BRIDGE STATION AREA

Payson, Utah

RED BRIDGE 12-PLEX SITE PLAN

Job #	
Dr. By	JAP
Ch. By	
Rev. By	
Revisions	
Date:	PRELIMINARY
Sheet:	A001
of	

Red Bridge Apartments

Lot 3 - Buildings 1-5

2-Bedroom Units

Decorative and
functional sun
screens

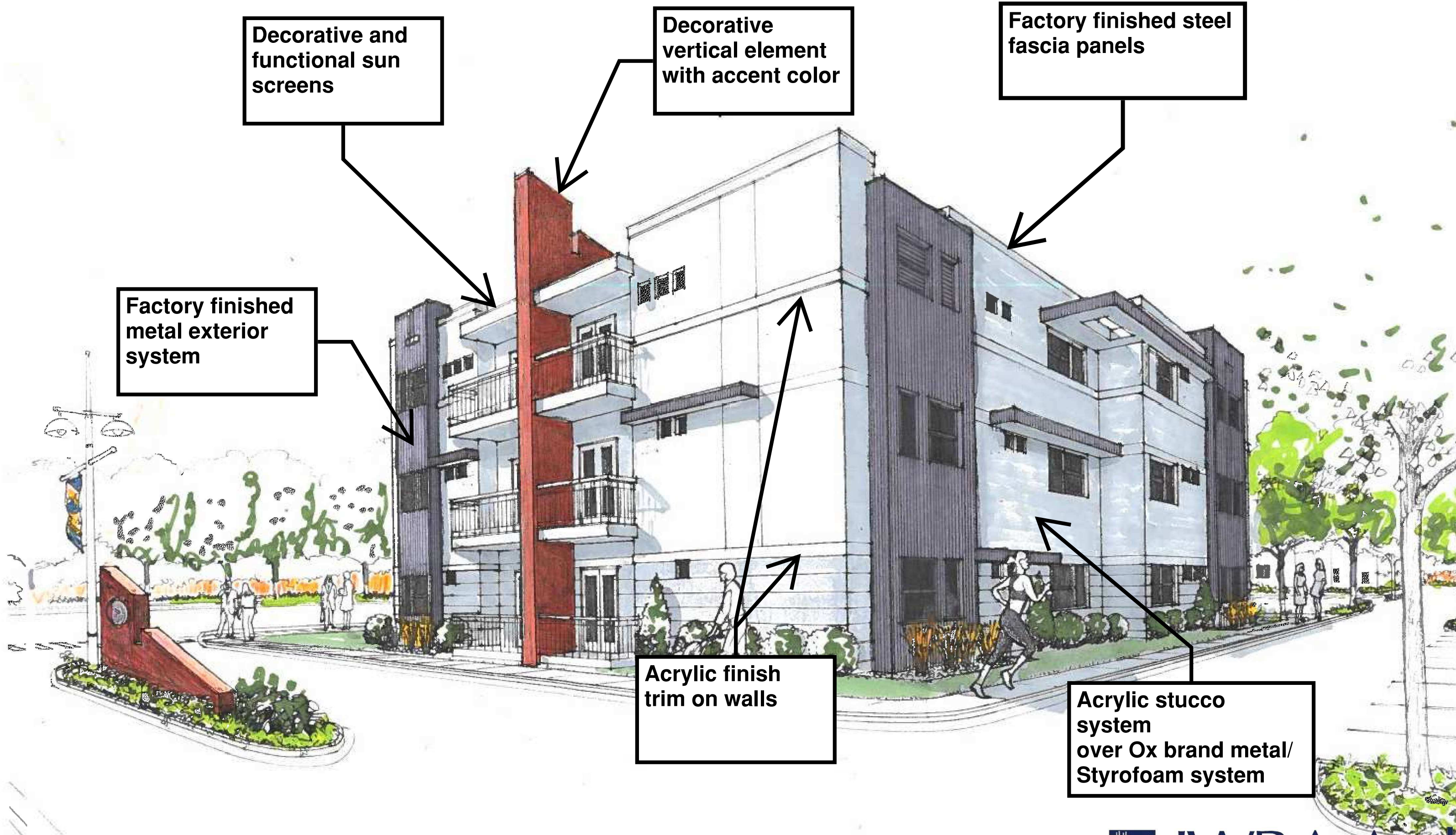
Decorative
vertical element
with accent color

Factory finished steel
fascia panels

Factory finished
metal exterior
system

Acrylic finish
trim on walls

Acrylic stucco
system
over Ox brand metal/
Styrofoam system





COPYRIGHT 2022
JNRA ARCHITECTS
ALL RIGHTS RESERVED
 ALL DESIGNS, DRAWINGS AND WRITTEN
 MATERIAL APPEARING HEREIN CONSTITUTE
 THE ORIGINAL & UNPUBLISHED WORK OF
 JNRA ARCHITECTS AND MAY NOT BE
 DUPLICATED, USED OR DISCLOSED
 WITHOUT THE WRITTEN CONSENT OF
 JNRA ARCHITECTS.

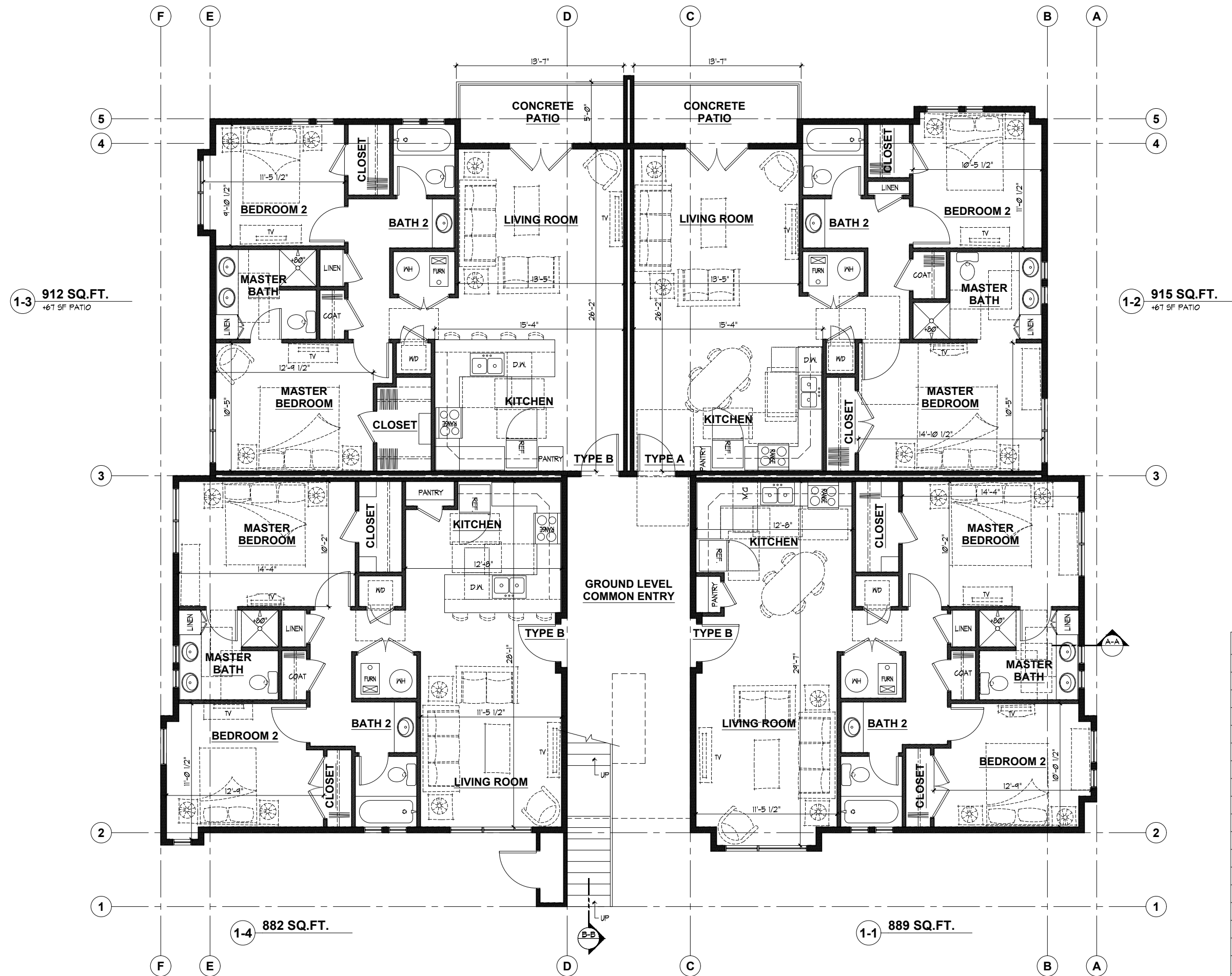
12-PLEX - 2-BED MULTI-FAMILY

Red Bridge Lot 3, Payson, Utah

Ground Level Floor Plan

2BR 12 Plex SQ.FT.		
UNIT #	UNIT TYPE	SQ.FT.
1-1	TYPE B	889 SQ.FT.
1-2	TYPE A	915 SQ.FT.
1-3	TYPE B	912 SQ.FT.
1-4	TYPE B	882 SQ.FT.
LEVEL 1 TOTAL: 3,598 SQ.FT.		
2-1	TYPE B	889 SQ.FT.
2-2	TYPE B	915 SQ.FT.
2-3	TYPE B	912 SQ.FT.
2-4	TYPE B	882 SQ.FT.
LEVEL 2 TOTAL: 3,598 SQ.FT.		
3-1	TYPE B	889 SQ.FT.
3-2	TYPE B	915 SQ.FT.
3-3	TYPE B	912 SQ.FT.
3-4	TYPE B	882 SQ.FT.
LEVEL 3 TOTAL: 3,598 SQ.FT.		
BUILDING TOTAL: 10,794 SQ.FT.		

Job #	
Dr. By	TJC
Ch. By	
Rev. By	
Revisions	
Date:	
PRELIMINARY	
Sheet:	



2BR- GROUND LEVEL FLOOR PLAN

1/4" = 1'-0"
(1/8" = 1'-0" ON 11x17 PAPER)

4,148 SQ.FT. AT EXTERIOR WALLS AND STAIRS INCLUDING COVERED ENTRY (PLUS 134 SQ.FT. IN 2 PATIOS)

Red Bridge Apartments
Lot 3 - Buildings 6-11
3-Bedroom Units

Decorative and functional sun screens

Factory finished steel fascia panels

Acrylic stucco system over Ox brand metal/Styrofoam system

Decorative vertical element with accent color

Acrylic finish trim on walls

Factory finished metal exterior system

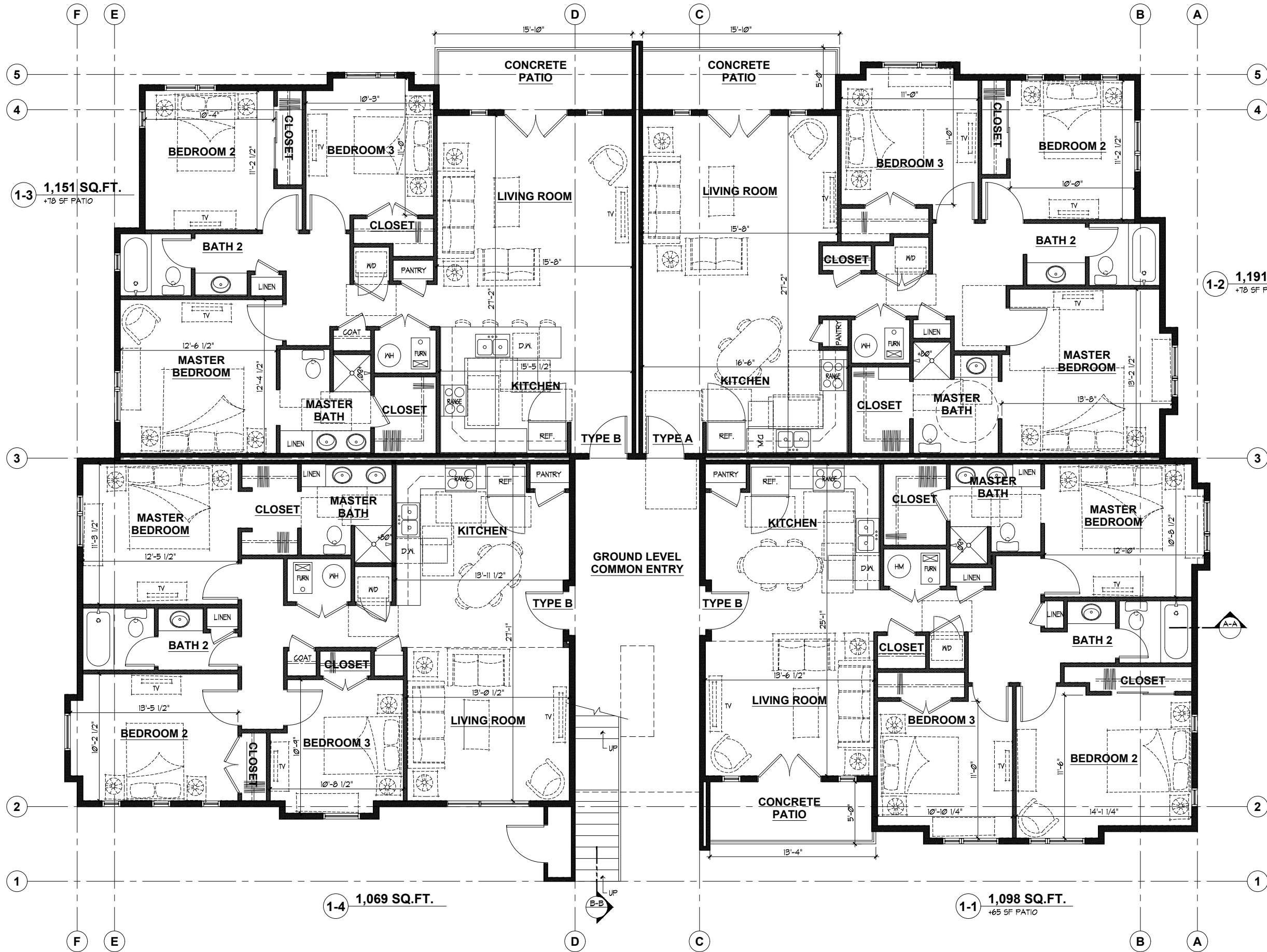
Red Bridge
Payson, Utah

12 Plex - 3 Bedroom

 **JWRA Architects**

COPYRIGHT 2020 JWRA ARCHITECTS - ALL RIGHTS RESERVED.
ALL DESIGNS, DRAWINGS AND WRITTEN MATERIALS APPEARING HEREIN CONSTITUTE THE ORIGINAL AND UNPUBLISHED WORK OF JWRA ARCHITECTS AND MAY NOT BE DUPLICATED, USED OR DISCLOSED WITHOUT THE WRITTEN CONSENT OF JWRA ARCHITECTS.

5/26/2022 9:42 AM MALOT ARCHITECTURE\LOT 03 - 12 PLEXES\TYPICAL 3 BEDROOMS- PROJECT PLANNING & DESIGN\3- SCHEMATIC DESIGN\CAD\03-3B- A102- GROUNDPLAN\DWG 042 042 AM



3BR- GROUND LEVEL FLOOR PLAN

1/4" = 1'-0"
(1/8" = 1'-0" ON 11x17 PAPER)

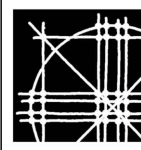
5,081 SQ.FT. AT EXTERIOR WALLS AND STAIRS INCLUDING COVERED ENTRY (PLUS 221 SQ.FT. IN 3 PATIOS)

3BR 12 Plex SQ.FT.		
UNIT #	UNIT TYPE	SQ.FT.
1-1	TYPE B	1,098 SQ.FT.
1-2	TYPE A	1,191 SQ.FT.
1-3	TYPE B	1,151 SQ.FT.
1-4	TYPE B	1,069 SQ.FT.
LEVEL 1 TOTAL: 4,509 SQ.FT.		
2-1	TYPE B	1,098 SQ.FT.
2-2	TYPE B	1,191 SQ.FT.
2-3	TYPE B	1,151 SQ.FT.
2-4	TYPE B	1,069 SQ.FT.
LEVEL 2 TOTAL: 4,509 SQ.FT.		
3-1	TYPE B	1,098 SQ.FT.
3-2	TYPE B	1,191 SQ.FT.
3-3	TYPE B	1,151 SQ.FT.
3-4	TYPE B	1,069 SQ.FT.
LEVEL 3 TOTAL: 4,509 SQ.FT.		
BUILDING TOTAL: 13,527 SQ.FT.		

12-PLEX - 3-BED MULTI-FAMILY
Red Bridge Lot 3, Payson, Utah
Ground Level Floor Plan

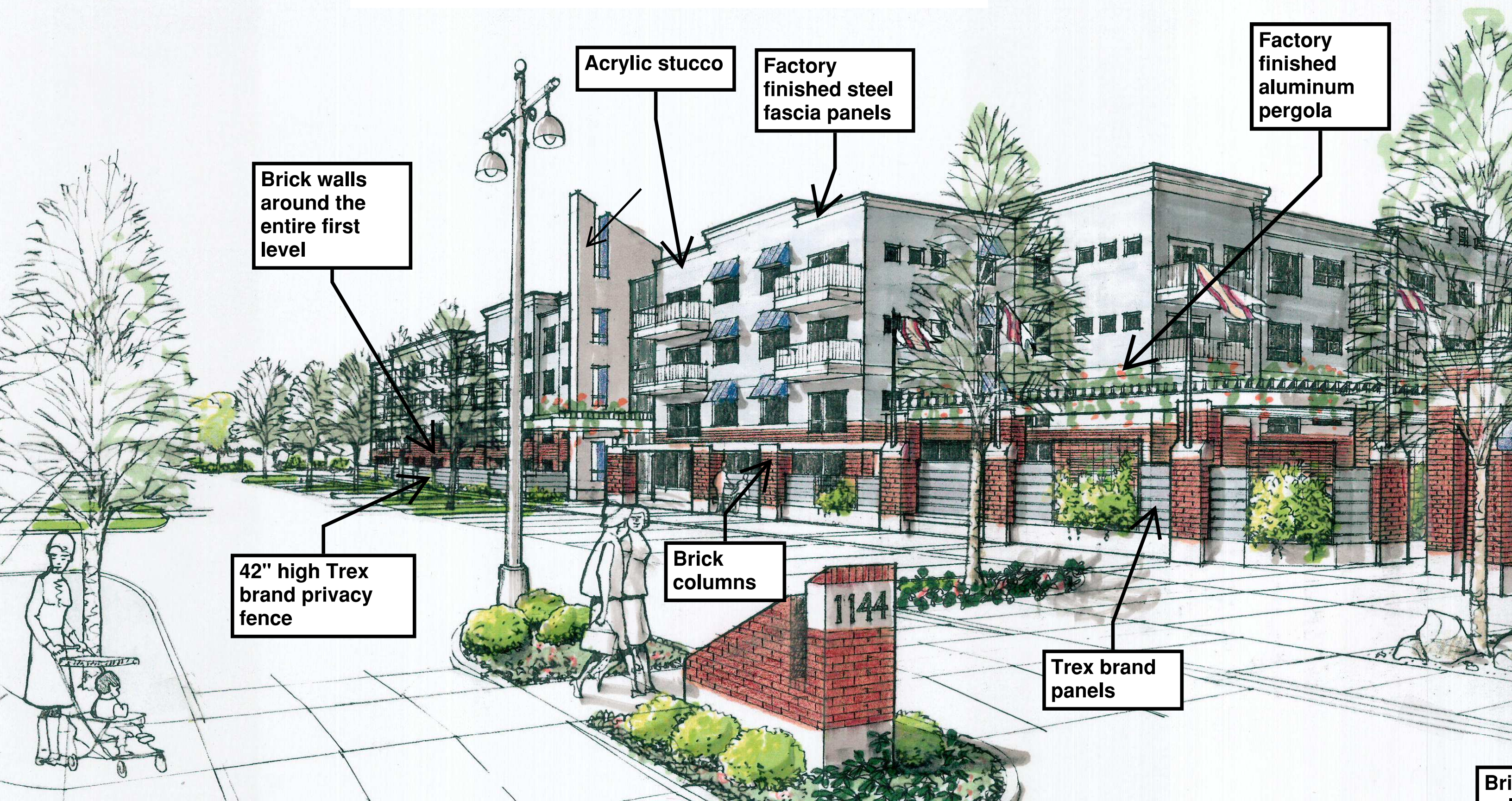
Job #	
Dr. By	TJC
Ch. By	
Rev. By	
Revisions	
Date:	PRELIMINARY
Sheet:	A102

JWRA Architects
2299 S. Highland Dr., Ste. 200
Salt Lake City, UT 84106
Phone: (801) 486-7777
www.jwraia.com



COPYRIGHT 2022
JWRA ARCHITECTS
ALL RIGHTS RESERVED
ALL DESIGNS, DRAWINGS AND WRITTEN
MATERIAL APPEARING HEREIN CONSTITUTE
THE ORIGINAL & UNPUBLISHED WORK OF
JWRA ARCHITECTS AND MAY NOT BE
DUPLICATED, USED OR DISCLOSED
WITHOUT THE WRITTEN CONSENT OF
JWRA ARCHITECTS

Red Bridge Apartments Lot 4 -2



6/29/2022 2:12 PM K:\PROJECTS\RED BRIDGE\RENDERING\RB BLDG 306A ENTRY RENDERING.dwg PLOT: 6/29/2022 2:13 PM

Brick
around the
1st floor
on all
sides of
the
building

Trex
brand
42"
fence
for
patios

Acrylic stucco over
Ox brand Styrofoam
weather barrier

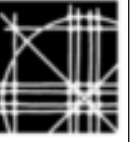
Pre- finished
steel fascia

Brick

Glass
entry

RED BRIDGE BUILDING 306A MAIN ENTRY APPRAISAL RENDERING

JWRA Architects
2299 S. Highland Dr., Ste. 200
Salt Lake City, UT 84106
Phone: (801) 486-7777
www.jwraia.com



COPYRIGHT 2020
JWRA ARCHITECTS
ALL RIGHTS RESERVED
THIS DRAWING IS THE PROPERTY OF JWRA ARCHITECTS AND IS NOT TO BE REPRODUCED OR TRANSMITTED IN ANY FORM OR BY ANY MEANS, ELECTRONIC OR MECHANICAL, WITHOUT THE WRITTEN CONSENT OF JWRA ARCHITECTS.

RB BLDG 306 APPRAISAL SET
Payson, Utah
BUILDING 306A ENTRY RENDERING

Job #	
Dr. By	JAP
Ch. By	
Rev. By	
Revisions	

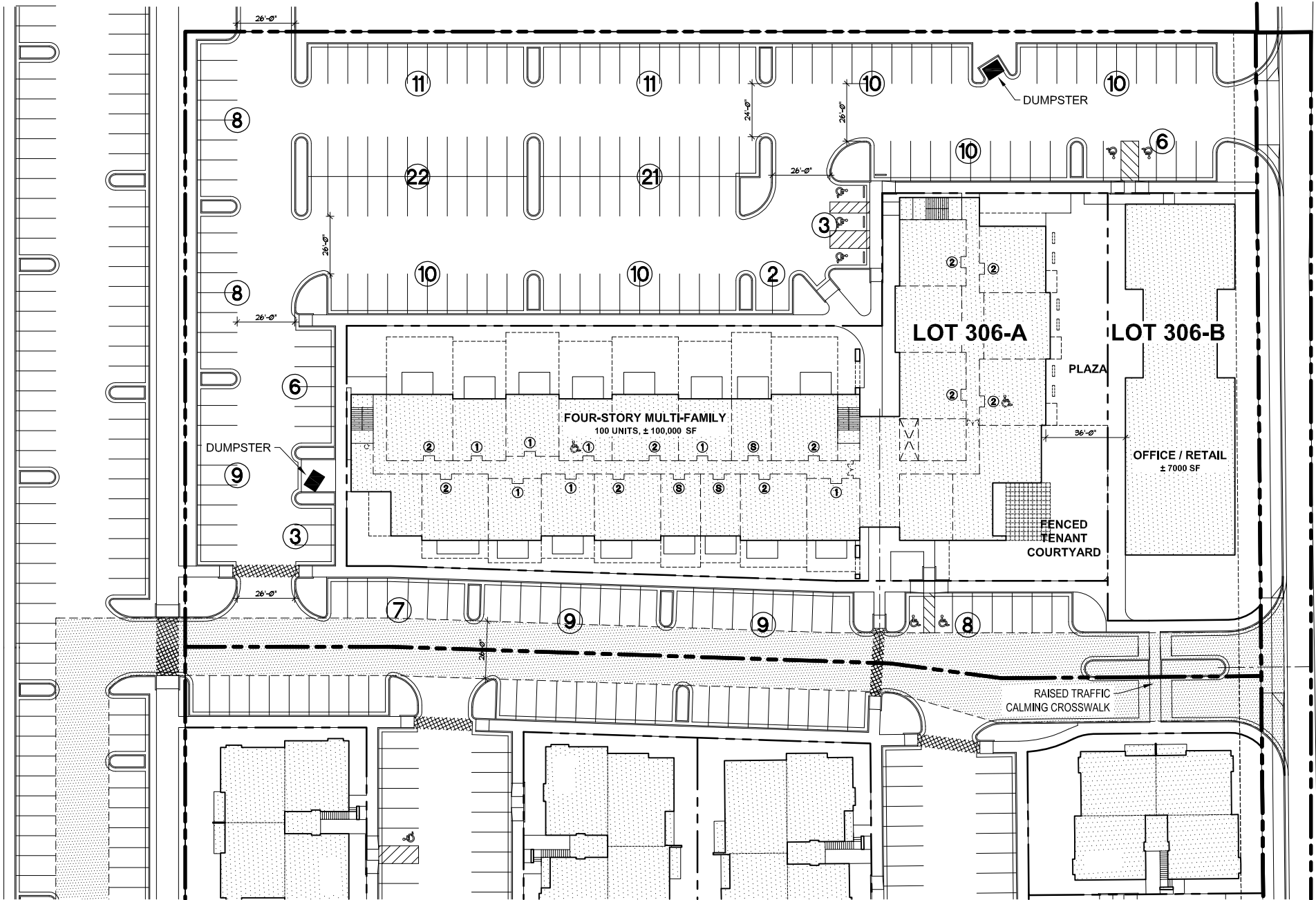
Date:

Sheet:
A000a

of

ARTIST'S INTERPRETATION

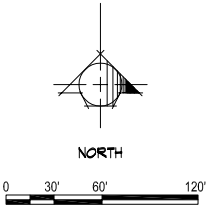
6/23/2021 1:26 PM R:\PROJECTS\DEVELOPMENT\19-294 - TURNER - PAYSON - SOUTH HAZARD\04 SITE DESIGN DEVELOPMENT\BUILDING 306A - 100 UNIT BUILDING\B-100 INT BUILDING SITEDWG P06.6/24/2021 1:52 PM



Buildings 306A & 306B Site Plan

1" = 30'-0"
(1" = 60'-0" ON 11x17 PAPER)

193 PARKING STALLS PROVIDED (7 ARE ADA)



RB BLDG 306 APPRAISAL SET
Payson, Utah
306A and 306B Site Plan

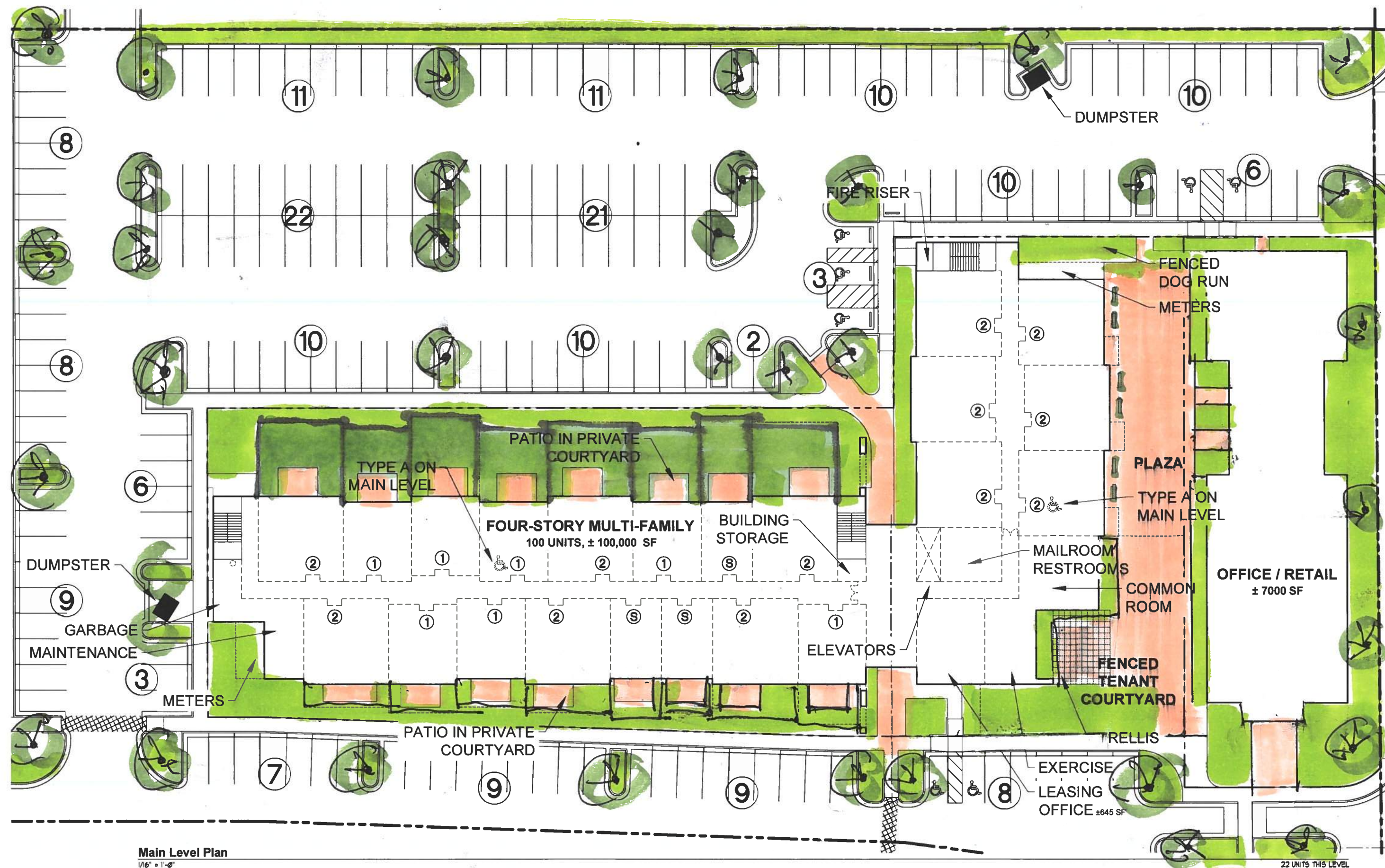
Job #	
Dr. By	JAP
Ch. By	
Rev. By	
Revisions	
Date:	

Sheet:	A001
-	of

COPYRIGHT 2020
JWRA ARCHITECTS
ALL RIGHTS RESERVED
ALL DESIGN, DRAWING AND WRITTEN
MATERIAL, PREPARING HEREIN CONSTITUTE THE
ORIGINAL & UNPUBLISHED WORK OF JWRA
ARCHITECTS AND MAY NOT BE REPRODUCED,
USED OR DISCLOSED WITHOUT THE WRITTEN
CONSENT OF JWRA ARCHITECTS.



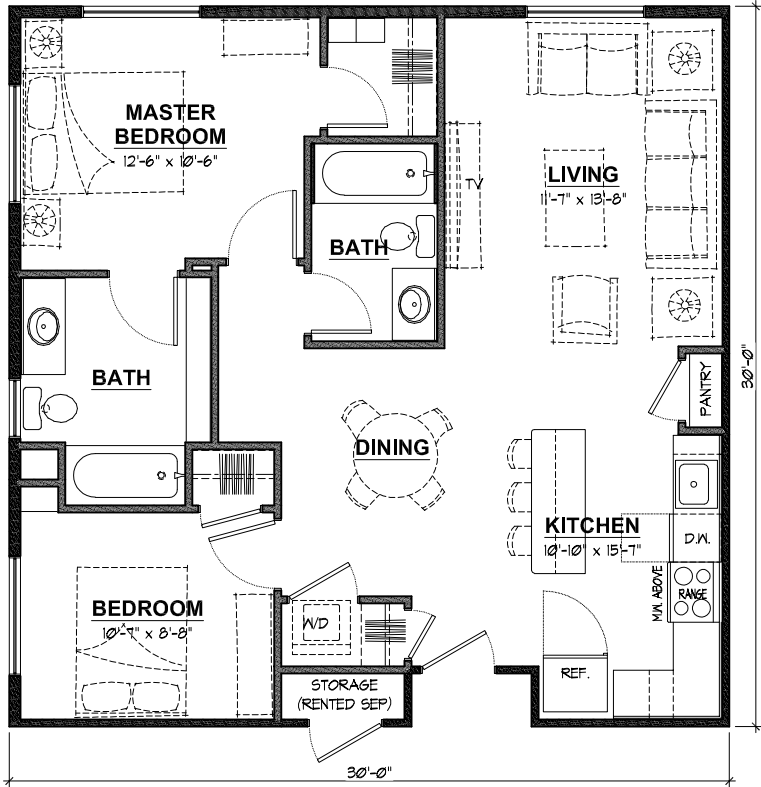
JWRA Architects
2299 S. Highland Dr., Ste. 200
Salt Lake City, UT 84106
Phone: (801) 486-7777
www.jwraia.com



JWRA Architects
 2299 S. Highland Dr., Ste. 200
 Salt Lake City, UT 84106
 Phone: (801) 486-7777
 www.jwraia.com

COPYRIGHT 2020
 JWRA ARCHITECTS
 ALL RIGHTS RESERVED
 NO PART OF THIS DOCUMENT MAY BE REPRODUCED OR TRANSMITTED IN ANY FORM OR BY ANY MEANS, ELECTRONIC OR MECHANICAL, WITHOUT PERMISSION IN WRITING FROM JWRA ARCHITECTS.

6/24/2021 1:38 PM R:\PROJECTS\DEVELOPMENT\18-284- TURNER- PAYSON- SOUTH MEADOWS\18 SITE DESIGN DEVELOPMENT\BUILDING 306A - 100 UNIT BUILDING\UNIT PLANS\306A- 2BED-UNIT\FLOORING PLOT6/24/2021 1:32 PM

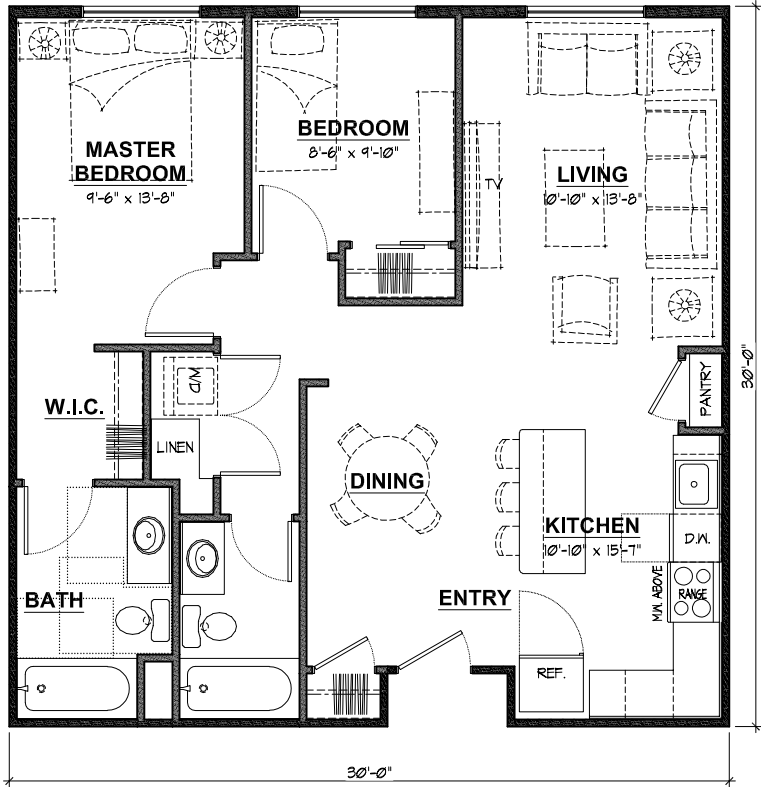


CORNER TWO BEDROOM TYPE B FLOOR PLAN

1/4" = 1'-0"
(1/8" = 1'-0" ON 11x17 PAPER)

QTY: 4

889 SQ.FT.

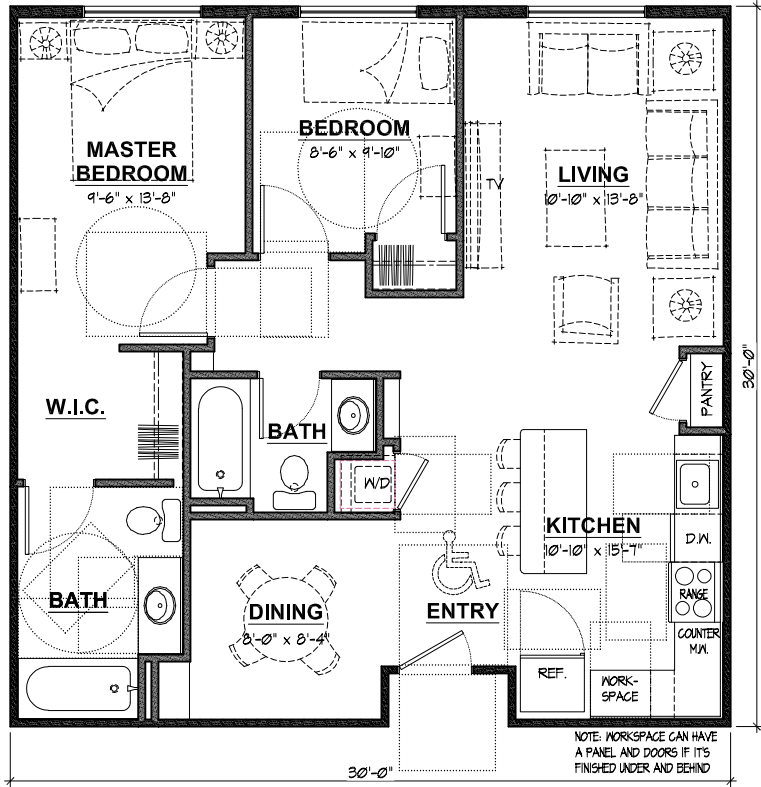


TWO BEDROOM TYPE B FLOOR PLAN

1/4" = 1'-0"
(1/8" = 1'-0" ON 11x17 PAPER)

QTY: 43

889 SQ.FT.



TWO BEDROOM TYPE A FLOOR PLAN

1/4" = 1'-0"
(1/8" = 1'-0" ON 11x17 PAPER)

QTY: 1

889 SQ.FT.

RB BLDG 306 APPRAISAL SET

Payson, Utah
Building 306A Two Bedroom Unit Plans

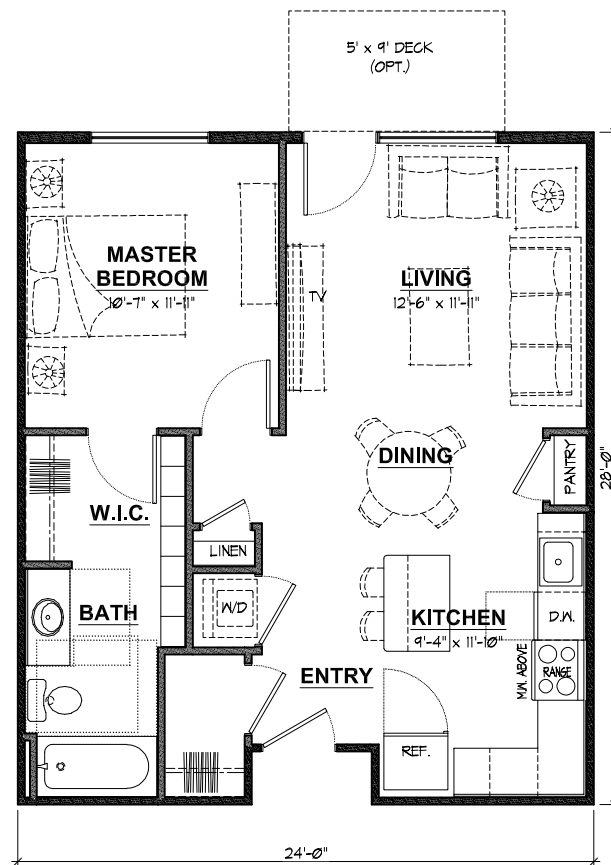
Job #	
Dr. By	JAP
Ch. By	
Rev. By	
Revisions	
Date:	

Sheet:	A004
	of

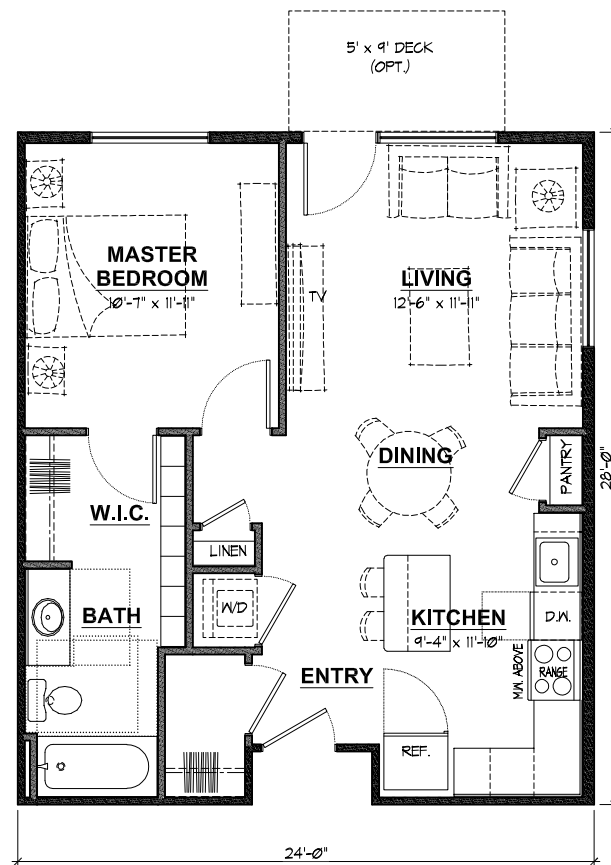


JWRA Architects
2299 S. Highland Dr., Ste. 200
Salt Lake City, UT 84106
Phone: (801) 486-7777
www.jwraia.com

COPYRIGHT 2020
JWRA ARCHITECTS
ALL RIGHTS RESERVED
ALL DESIGN, DRAWINGS AND WRITTEN
MATERIAL, APPEARING HEREIN CONSTITUTE THE
ORIGINAL, & UNPUBLISHED WORK OF JWRA
ARCHITECTS AND MAY NOT BE REPLICATED,
USED OR DISCLOSED WITHOUT THE WRITTEN
CONSENT OF JWRA ARCHITECTS.



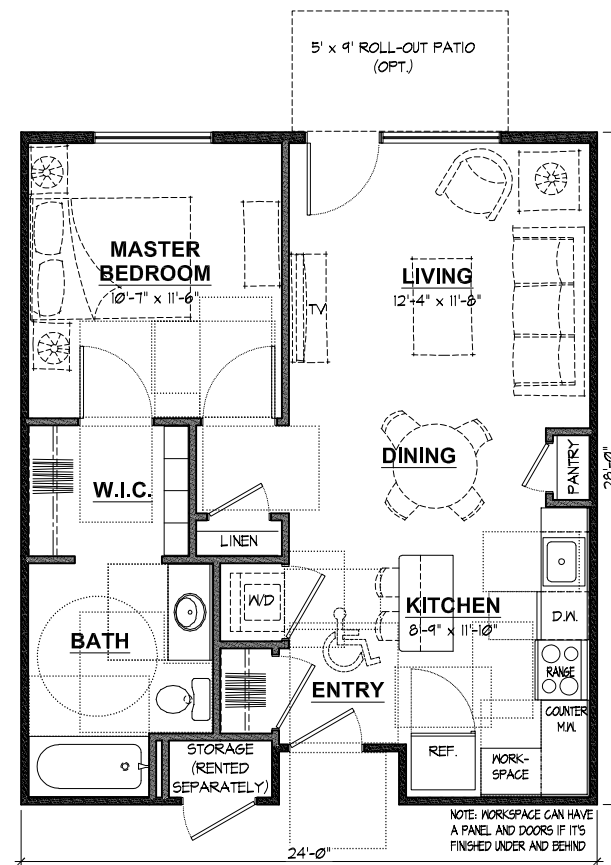
ONE BEDROOM TYPE B FLOOR PLAN **QTY: 30**
 1/4" = 1'-0"
 (1/8" = 1'-0" ON 11x17 PAPER) 661 SQ.FT.



CORNER ONE BEDROOM TYPE B FLOOR PLAN **QTY: 9**

1/4" = 1'-0"
(1/8" = 1'-0" ON 11x17 PAPER)

661 SQ.FT.



ONE BEDROOM TYPE B FLOOR PLAN **QTY: 1**
 1/4" = 1'-0"
 (1/8" = 1'-0" ON 11x17 PAPER) 649 SQ.FT.



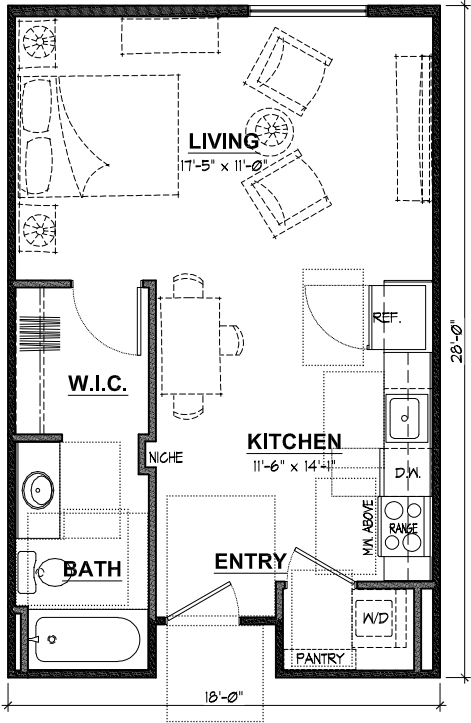
JWRA Architects
2299 S. Highland Dr., Ste. 200
Salt Lake City, UT 84106
Phone: (801) 486-7777
www.jwraia.com

COPYRIGHT 2020
JHRA ARCHITECTS
ALL RIGHTS RESERVED
ALL DESIGNS, DRAWINGS AND WRITTEN
MATERIAL APPEARING HEREIN CONSTITUTE THE
ORIGINAL & UNPUBLISHED WORK OF JHRA
ARCHITECTS AND MAY NOT BE DUPLICATED,
USED OR DISCLOSED WITHOUT THE WRITTEN
CONSENT OF JHRA ARCHITECTS.

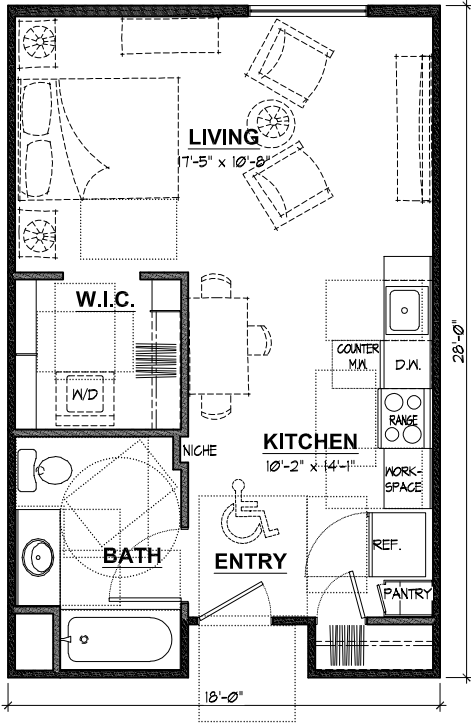
RB BLDG 306 APPRAISAL SET
Payson, Utah
Building 306A One Bedroom Unit Plans

Job #	
Dr. By	JAP
Ch. By	
Rev. By	
Revisions	
Date:	

Sheet:
A005
of



STUDIO TYPE B FLOOR PLAN **QTY: 11**
1/4" = 1'-0"
(1/8" = 1'-0" ON 11x17 PAPER) 493 SQ.FT.

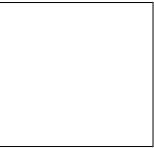


STUDIO TYPE A FLOOR PLAN **QTY: 1**
1/4" = 1'-0"
(1/8" = 1'-0" ON 11x17 PAPER) 493 SQ.FT.



JWRA Architects
2299 S. Highland Dr., Ste. 200
Salt Lake City, UT 84106
Phone: (801) 486-7777
www.jwraia.com

COPYRIGHT 2020
JWRA ARCHITECTS
ALL RIGHTS RESERVED
ALL DESIGNS, DRAWINGS AND WRITTEN MATERIAL APPEARING HEREIN CONSTITUTE THE ORIGINAL & UNPUBLISHED WORK OF JWRA ARCHITECTS AND MAY NOT BE REPLICATED, USED OR DISCLOSED WITHOUT THE WRITTEN CONSENT OF JWRA ARCHITECTS.



RB BLDG 306 APPRAISAL SET
Payson, Utah
Building 306A Studio Unit Plans

Job #	
Dr. By	JAP
Ch. By	
Rev. By	
Revisions	
Date:	

Sheet:
A006
of